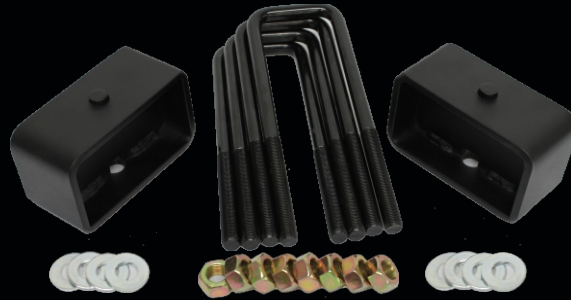


## GM 1500 REAR LEVELING LIFT KIT

### INSTALLATION INSTRUCTIONS



### \*\*Please Note\*\*

On the 2007-2019 models the new blocks will replace the factory blocks 1" blocks.

If you ordered a 1" rear kit you will receive a 2" tall block  
If you ordered a 2" rear kit you will receive a 3" tall block



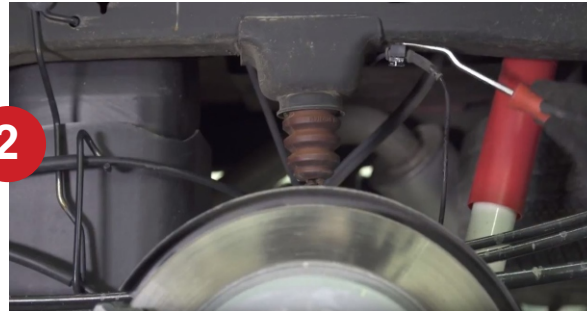
**WATCH INSTALL VIDEOS:**  
Scan this code with your phone to see a installation video or go to [www.youtube.com/c/MotoFabLifts](http://www.youtube.com/c/MotoFabLifts)

### GETTING STARTED:

Jack up the rear of the vehicle and support the vehicle with jack stands.



1 Support the rear axle with a jack and jack stands.



2 Remove the brake and parking brake cables so there is slack in the lines.



3 Remove the lower rear shock mount nut and bolt.

## IMPORTANT

### Terms and conditions

Please read the following terms and conditions of use before using this product. All users of this product are subject to the following terms and conditions and other applicable law. If you do not agree with these terms do not use this product. All parts of this product should be assembled or installed by a certified mechanic.

### Limitation of Liability

MotoFab or its affiliates shall not be liable for any damages or consequential damages that result from the use of or inability to use the materials on this product or the performance of the product. Even if MotoFab or its affiliates have been advised of the possibility of such damages. Applicable law may not allow the limitation of exclusion of liability or incidental or consequential damages. So the above limitation or exclusion may not apply to you.

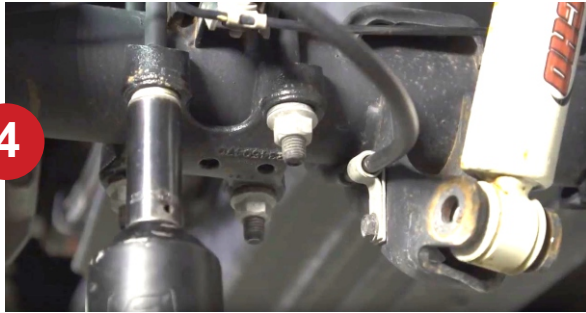
\*\*\*\*\*These blocks replace the factory 1" blocks on the 2007-2019\*\*\*\*\*

# CHEVY SILVERADO LEVELING KIT

100% SATISFACTION GUARANTEED  
LIFETIME WARRANTY • MADE IN USA



QUESTIONS? CALL 800-430-8674



4

Remove the factory rear U-bolts and discard them.



5

Lower the axle to remove the factory block.



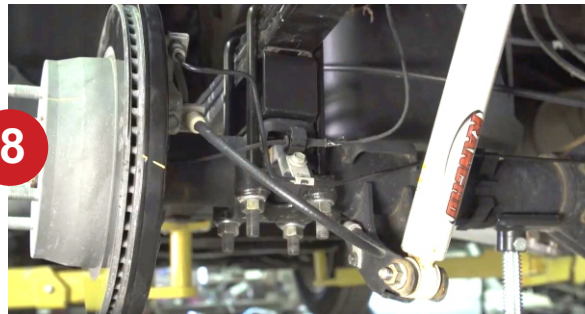
6

Install the new rear block making sure the **smaller side of the spacer is facing the front of the truck**



7

Install the new supplied U-bolts and torque to factory spec.



8

Complete the installation on the other side of the truck before reinstalling any brake or ABS lines. After 100 miles recheck torque to factory spec.

## Installation Notes:

The new rear blocks are tapered to correct the pinion angle. The smaller side of the taper faces the front of the truck.

On 2007-2019 model years there will be a factory 1" rear block. The new blocks will replace the factory block to give you the correct lift amount. If you ordered a 2" rear lift kit the block will measure 3" tall.

**\*\*\*The rear blocks are tapered. The smaller side faces the front of the truck\*\*\***

**IMPORTANT:** BEFORE DRIVING THE VEHICLE MAKE SURE ALL HARDWARE IS TORQUED TO FACTORY SPECS.  
AFTER INSTALLING THE KIT, A THE TRUCK NEEDS TO BE ALIGNED BACK TO FACTORY SPEC.