

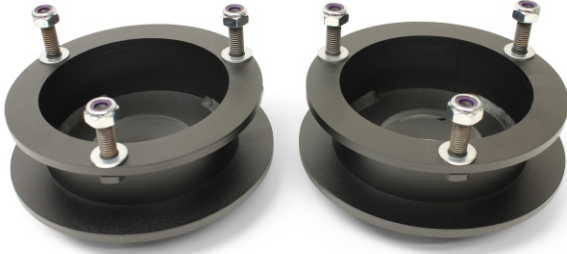


1994-2013 DODGE RAM 2500/3500 (NON RADIUS ARM) 4WD

94-01 - Ram 1500 4WD

2006-2009 Mega Cab 4WD

## Front lift kit instructions



- Step 1: Raise the vehicle and support the frame with jack stands.
- Step 2: Remove the front wheel.
- Step 3: Disconnect the passenger and driver side sway bar end links.
- Step 4: Support front axle with jack.
- Step 4: Remove lower shock mounting bolt under spring mount.
- Step 5: Loosen all (3) upper shock tower mounting nuts. Leave on.
- Step 6: Slowly lower axle in order to remove shock and coil spring.
- Step 7: Remove spring towards the front of the vehicle.
- Step 8: Next, remove upper rubber spring isolator.
- Step 9: Then remove shock tower nuts and retaining plate
- Step 10: Install spring spacer over shock and into factory position.
- Step 11: Install spring spacer into frame pocket w/provided hardware.
- Step 12: Reinstall OE rubber spring isolator onto spacer.
- Step 13: Reinstall spring back into position and raise axle.
- Step 14: Then reconnect lower shock bolt and tighten the upper shock mounting bracket. Reinstall wheels/tires, lower to ground and torque. Reconnect Lower sway bar endlinks and test drive. Recheck all work performed and have vehicle aligned.

Terms and conditions

**Please read the following terms and conditions of use before using this product**

All users of this product are subject to the following terms and conditions and other applicable law. If you do not agree with these terms do not use this product. All parts of this product should be assembled or installed by a certified mechanic.

### Limitation of Liability

MotoFab or its affiliates shall not be liable for any damages or consequential damages that result from the use of or inability to use the materials on this product or the performance of the product. Even if MotoFab or its affiliates have been advised of the possibility of such damages. Applicable law may not allow the limitation of exclusion of liability or incidental or consequential damages. So the above limitation or exclusion may not apply to you.